

# INSTALLATION GUIDE

## FX Fusion LC Connector – 900um



### Material:

- Fusion Splicer and Cleaver
- FX Fusion Splice-On Installation Tool Kit.
- FX Fusion Splice-On LC Connector Kit
- FX Fusion Splice Holder

### FX Fusion Splice-On Installation Tool Kit content:

- Fiber/cable stripper
- Tweezers
- Pen Marker
- Alcohol Wipes
- Scissors
- Waste Bottle
- Safety Glasses
- Installation card
- Cleaver
- Jacket slitter



Fusion Splicer Heat Settings			Splice Holder Part Number
Model	Temp.	Time	
Ilsintech KF4	150°C	20 s	FXFSSHFM2
Sumitomo Q101	150°C	20 s	
Fujikura 70S	150°C	20 s	FXFSSHFM1
Fujikura 60S	150°C	30 s	

For additional fusion splicer models, refer to document AEN-1700 available at [www.belden.com/Splice-On](http://www.belden.com/Splice-On)

### Caution:

- When installed on a live system, invisible laser radiation may be present.
- Do not stare into connector endface or view directly with optical instruments.
- Wear safety glasses when working with optical fiber.
- Dispose of all scrap fiber in the waste bottle to avoid getting fiber slivers.
- Do not touch cleaver blade.



### Cleanliness:

- Keep exposed fiber components clean as well as your environment.
- Keep dust caps on and avoid dust creating activities.
- Clean endface with alcohol wipes and then dry wipe as cleaning procedures.

### Instructions for Cleaver:

- If the cleaver does not work properly rotate the blades following cleaver's manufacturer instructions.
- Clean cleaver's blade with alcohol wipes.

**EN:** Visit our WEB site at [www.belden.com/Splice-On](http://www.belden.com/Splice-On) to get the installation guide.

**ES:** Visite nuestra pagina WEB [www.belden.com/Splice-On](http://www.belden.com/Splice-On) para obtener el guía de instalación en español.

**FR:** Veuillez visiter notre site WEB au [www.belden.com/Splice-On](http://www.belden.com/Splice-On) pour obtenir le guide d'installation en français.

### Fusion Splicer setup:

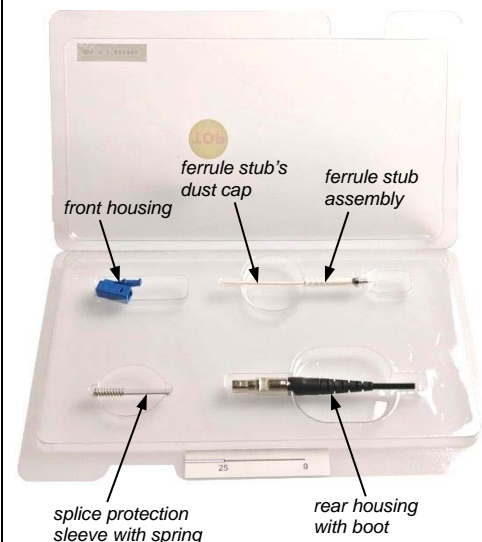
- Following manufacturer's instructions:
  - Perform calibration and arc check.
  - Select the appropriate splicing mode based on fiber type (SM or MM).
  - If applicable remove the left fiber holder.
  - Set the heat mode according to the Heat Settings Table on this document.



- Open the sealed bag of the FX Fusion Splice-On LC Connector Kit.



- Carefully open the clamshell.

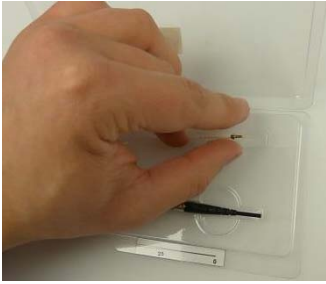


# INSTALLATION GUIDE

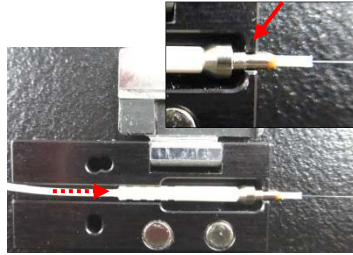


## FX Fusion LC Connector – 900um

4. Remove the *ferrule stub assembly* from the clamshell by grabbing the dust cap. Do NOT touch the fiber.



5. Place the *ferrule stub assembly* in the *FX Fusion splice holder* and push it to the right up to the position shown below.



5.a Close the holder's cover.

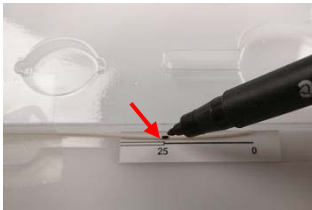
6. Load the *splice holder* in the fusion splicer.



7. Load the *rear housing* and the *splice protection sleeve* on the cable of the LC pigtail.



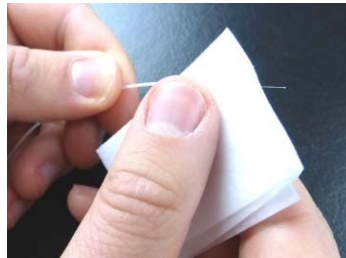
8. Using the scale on the clam shell mark the cable at **25 mm**.



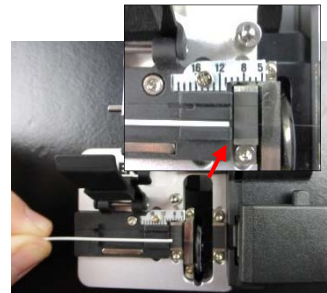
9. Strip the cable from that mark.

**Caution:** to avoid breaking the fiber the cable should be stripped about 5 mm at a time.

10. Clean the fiber.

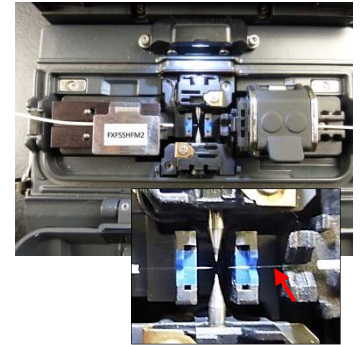


11. Cleave the fiber at **10 mm**.



**Caution:** do NOT touch or attempt to clean the cleaved fiber.

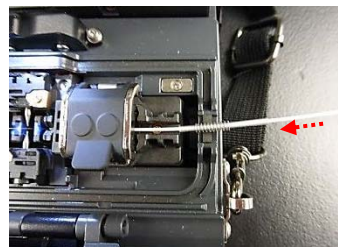
12. Place the cleaved fiber in the V-groove (on the right side) of the fusion splicer.



13. Perform the fusion.



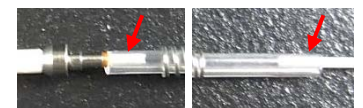
14. Bring the *splice protection sleeve* close to the splicer.



15. Open the splice holder and, holding the cable and the dust cap, remove the spliced cable assembly from the splicer.



16. Carefully slide the *splice protection sleeve* to have the buffer fiber of the *ferrule stub assembly* and a portion of the buffer of the cleaved fiber covered.



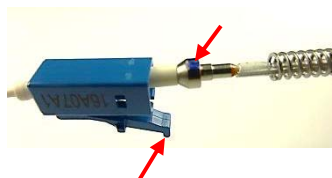
17. Place the cable assembly in the splicer's heater and, following manufacturer's instructions and Belden's heat settings, heat the *splice protection sleeve*



18. Remove the cable assembly from the heater after the shrinkage is completed.

**Caution:** spring will be hot once removed from the heater.

19. Bring the *front housing* close to the *splice protection sleeve*. The circular mark on the metal ferrule must be facing up when the latch of the housing is facing down.



20. Aligning *rear housing's* tabs with *front housing* cutouts snap the 2 parts together.



21. Cut the excess of the dust cap's rod.

