



GV-VMS 18.1

INTEGRATING GV-AI FR, FACE RECOGNITION & DETECTION

CAMERAS FOR AN ALL-INCLUSIVE SMART VIDEO MANAGEMENT

The All New
VMS
version 18.1

Live Mobile Streaming Smart Search 3D-Emap & Tracking POS

AI OPTIMIZED
Unleash the Power of Video Intelligence

Your fitting video management solution, transformed. By extending the video analytics prowess of GeoVision's evolutionary face recognition server — *GV-AI FR* and *GV-Face Recognition Cameras*, **GV-VMS 18.1 empowers everyday IP cameras to enroll face profiles** to connected **smart devices**, as well as **search for face recognition events by face snapshots or photos**, and more!

- ✔ Face Search with GV-Face Detection / Recognition Cameras and GV-AI FR
- ✔ Face Recognition Features Enhanced with Conformability to Everyday IP Cameras and Extensive Alarm Triggers
- ✔ Cross-system Security by Integrating GV-Face Recognition to Access Control
- ✔ Turning Mobile Device Cameras into Security Cameras with GV-Live Streaming app
- ✔ And Many More Functions & Features of VMS V18.1 for You to Explore!

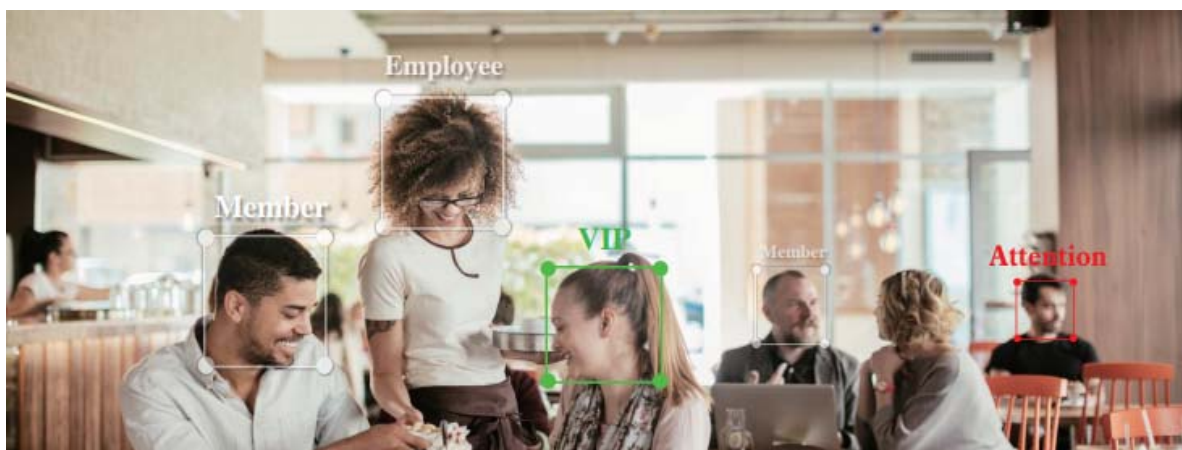


Face Search with GV-Face Detection / Recognition Cameras and GV-AI FR

GV-VMS allows users to **search** for and play back face recognition and detection events with connected GV-Face Detection / Recognition Cameras and GV-AI FR **by using face snapshots & photos, age, gender, name, face group and alert type.**

Event Image	Recognition Result	Name	Confidence (> 5...	Group	Camera Name	Time	Age	Gender	Alert	Never Recycle
		Eric Chiu	---	Authorized	Camera14	3/11/2020 1:41:09 PM	24	Male		
		Eric Chiu	86.00 %	Authorized	Camera14	3/11/2020 11:16:31 AM	23	Male		
		Eric Chiu	85.55 %	Authorized	Camera14	3/11/2020 11:15:46 AM	27	Male		
		Eric Chiu	83.69 %	Authorized	Camera14	3/11/2020 10:04:28 AM	31	Male		

Face Recognition Enhanced with Conformability to Everyday IP Cameras and Extensive Alarm Triggers



- **Quick Face Enrollment** — From *live view* and *recordings of ordinary IP cameras to smart devices*, GV-VMS allows users to enroll face images **from any camera channel to a connected GV-Face Recognition device** quickly and intuitively.
- **Synchronizing Specific Face IDs** — GV-VMS is able to simultaneously manage the Face databases of multiple GV-Face Recognition devices and **selectively synchronize** Face IDs among them.



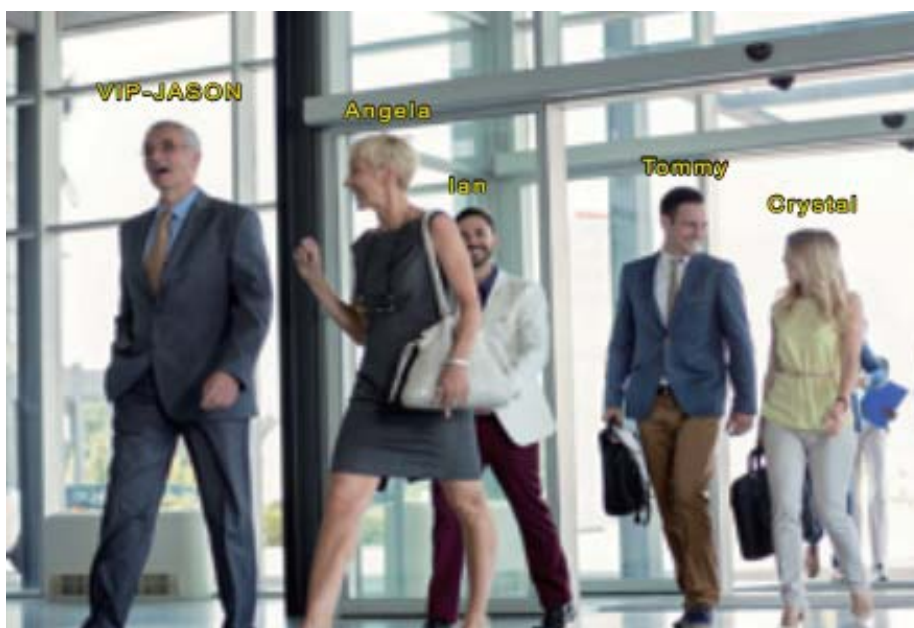
- **Face ID List** — With its Face ID feature dedicated to display realtime, color-coded face recognition events, GV-VMS ensures users can identify individuals of certain **Face Groups**, such as *Unknown* or *Blacklist* easily and efficiently.



- **Face Event Alarm Triggers** — Upon abnormal face recognition events, such as *Unknown* or *Schedule Alert*, faces recorded outside of his/her allowed access schedule, GV-VMS can be configured to trigger **I/O devices** and **computer alarms**, send **notifications via e-mail** and **GV-Notify**, and/or **execute a designated program**.

Security Revamped by Unlocking Doors through Face Recognition with Integration to Access Control System GV-ASManager

Fulfilling an automated access control management with smart technology, GV-VMS is able to **pair access card data** to the **Face IDs** of GV-Face Recognition devices to be sent to GV-AS Controllers for unlocking doors, managed by GV-ASManager, upon face recognition events.




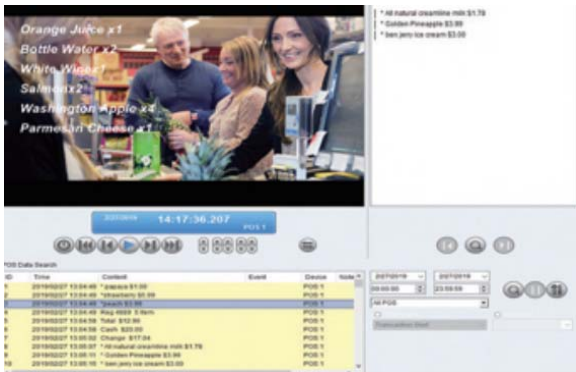


Turning Mobile Device Cameras into Security Cameras with GV-Live Streaming app

Via **GV-Live Streaming**, the camera of any **Android / iOS** mobile device can be easily added to, streamed and recorded on GV-VMS.



Many More Handy Functions and Features for You to Explore

- **GV-Eye Connection via QR Code** — Starting from GV-VMS V18.1, it can be connected and accessed remotely by a simple QR-code scan with **GV-Eye** mobile app. 
- **Remote Monitor Display with GV-Decoder Box** — Supporting **GV-Decoder Box**, GV-VMS can assign camera channels to be displayed on a remote monitor within the same LAN, not only improving monitoring flexibility but also reducing CPU loading.
- **POS Quick Search** — Users can easily search for and play back past POS events by **keyword, device, date & time** and the **type** of POS event. 
- **Automated Video Repair** — GV-VMS V18.1 can be configured to repair videos by **synchronizing** recordings from the **SD cards** of GV-IP and ONVIF cameras after a temporary disconnection.
- **Remote Live View & Playback on Non-IE Browsers** — Even when users are away from the GV-VMS, it is able to **stream high-quality** live view and recordings onto non-IE browsers via its WebCam server.

Can't wait to upgrade your GV-VMS to V18.1? Starting from V18.1, GV-VMS requires a purchased license to run. Please contact our sales representatives for assistance.



For detailed information, please refer to below.

*** Product Information:**

Webpage	http://www.geovision.com.tw/product/GV-VMS
Version History	https://s3.amazonaws.com/geovision_downloads/Manual/VMS/GV-VMShistory.pdf
Feature-Guide	https://s3.amazonaws.com/geovision_downloads/Manual/VMS/EN/GV-VMS_Feature-Guide_181.pdf
Software Licensing	https://s3.amazonaws.com/geovision_downloads/Manual/VMS/Licensing_GV-VMS_181.pdf
Quick Start Guide	https://s3.amazonaws.com/geovision_downloads/Manual/VMS/EN/GV-VMS_Quick_Start_Guide_181.pdf
User's Manual	https://s3.amazonaws.com/geovision_downloads/Manual/VMS/EN/GV-VMS_User_Manual_181.pdf

GV-Face Recognition / Smart Devices

- **GV-Face Recognition Cameras:** [GV-VD8700](#), [GV-FD8700-FR](#)
- **GV-AI FR Server:** 8-CH video analytic server for face recognition. (coming soon)
- **GV-Face Detection Cameras:** [GV-BX2600-FD](#), [GV-BX2700-FD](#), [GV-BX4700-FD](#), [GV-BX8700-FD](#), [GV-MD8710-FD](#)