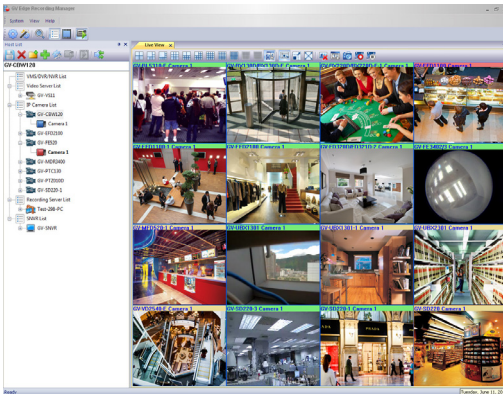
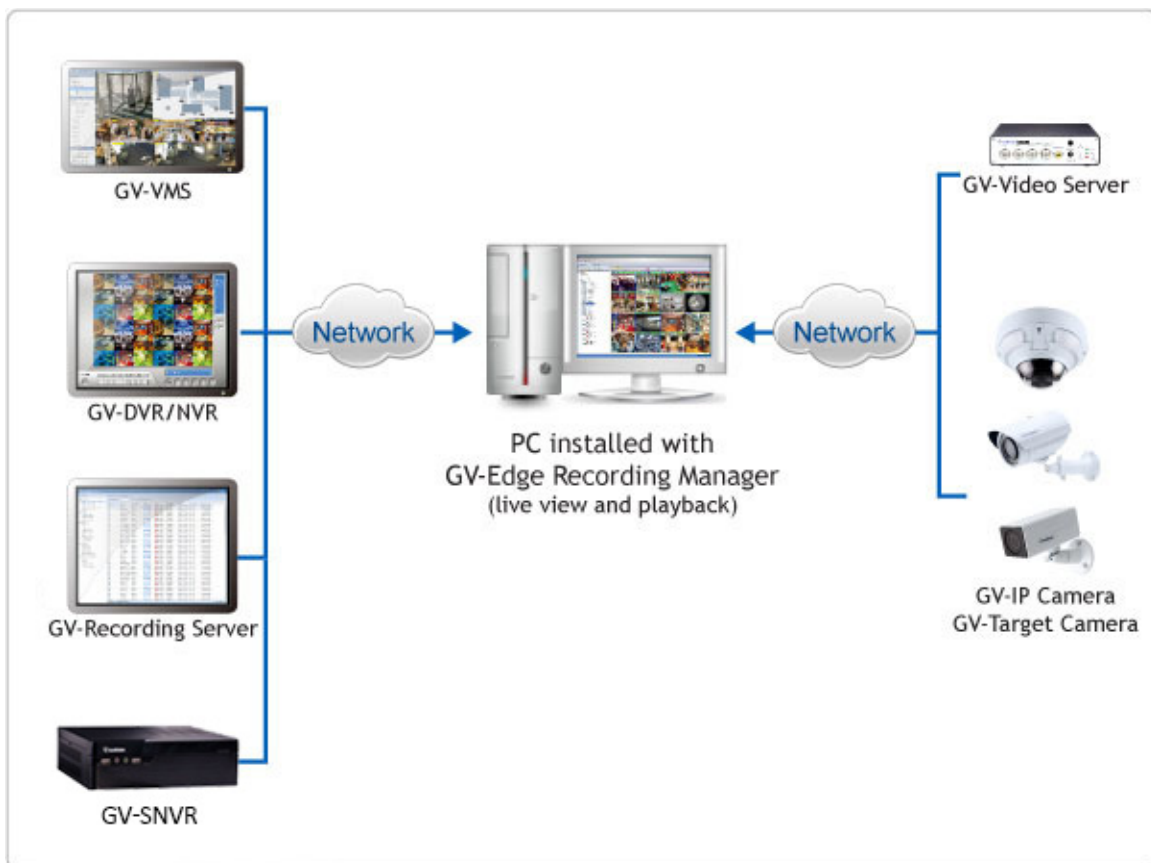


## GV-Edge Recording Manager (Windows Version)



### Introduction

GV-Edge Recording Manager is a tool designed for recording management of remote GV-IP Cameras and GV-Target Cameras. It is an integrated interface from which you can access live view, assign recording to NAS servers, enable recording, play back videos and view storage space without visiting each host's Web interface. Any connection with hosts can be disabled without affecting or stopping the hosts' normal functioning. GV-Edge Recording Manager also supports live view display and video playback of hosts connected to GV-Video Server, GV-DVR / NVR / VMS, GV-Recording Server and GV-SNVR.



## Assigning Recording to NAS Servers

Through GV-Edge Recording Manager, you can have GV-IP Cameras or GV-Target Cameras record to NAS servers and also view the storage information such as the occupied space and remaining space. GV-NAS Systems are also available at your choice.



## Features

- Display up to 32 channels for free, up to 64 channels using a GV-USB dongle
- On-demand display for dual channels
- Fisheye dewarping
- PIP / PAP view
- Manual snapshot
- Enable and disable host recording for GV-IP Devices
- Host storage assignment to NAS servers for compatible GV-IP Devices
- Remote playback
- Batch IP address assignment for GV-IP Devices
- PTZ control
- Two-way audio
- Import and export of system configuration
- View storage information (free and occupied space) for GV-IP Devices

## Minimum System Requirements

OS	32-bit	Windows 7 / 8 / 8.1 / 10 / Server 2008
	64-bit	Windows 7 / 8 / 8.1 / 10 / Server 2008 R2 / Server 2012 R2
CPU	32 channels (with Dual Streams)	Core i3-4130, 3.4 GHz
	64 channels (with Dual Streams)	Core i5-4670, 3.4 GHz
Memory	32 Channels (with Dual Streams)	2 x 1 GB
	64 channels (with Dual Streams)	2 x 2 GB
Graphic Card		PCI-Express, 800 x 600 (1280 x 1024 recommended), 32-bit color

## Software License

Free License	32 channels
Maximum License	64 channels
Increment for Each License	N/A
Optional Combinations	N/A
Dongle Type	Internal or external

**Note:** It is recommended that you use the internal GV-USB Dongle to have the Hardware Watchdog function which restarts the PC when Windows crashes or freezes.

## Compatible GeoVision IP Devices and Software

GV-IP Devices		Supported Version
GV-IP Camera		V3.00 or later
GV-IP Speed Dome	GV-SD220	V1.04 or later
	GV-SD2300/2301	V1.08 or later
	GV-SD2411	V1.01 or later
	GV-SD2322/3732-IR	V1.00 or later
GV-Target Camera		V1.00 or later
GV-PPTZ7300		V1.00 or later
GV-Video Server	GV-VS11	V1.03 or later
	GV-VS12	V1.07 or later
	GV-VS14	V1.01 or later
	GV-VS2400/2420	V1.00 or later
	GV-VS2800/2820	V1.00 or later
GV-NVR System	GV-SNVR0400F	V1.10 or later
	GV-SNVR1600	V1.10 or later
GV-Software		Supported Version
GV-Recording Server		V1.2.4.0 or later
GV-System (GV-DVR/NVR)		V8.7.1.0 or later
GV-VMS		V14.10 or later

**Note:**

1. For the NAS application, it is required to use GV-IP Cameras (firmware V3.00 or later), GV-Target Cameras (firmware V1.02 or later), GV-EFD2101/EFD3101/EVD2100/EVD3100 (firmware V1.00 or later)..

2. Files recorded to GV-NAS Systems are stored in the MPEG4 format and those recorded to memory cards are stored in the AVI format.

## Specifications

Supported Hosts		
GV-System (GV-DVR/NVR)	64 hosts	
GV-VMS		
GV-Recording Server		
GV-IP Camera		
GV-Target Camera		
GV-IP Speed Dome		
GV-Video Server		
GV-SNVR0400F/1600		
Live View		
No. of Channels	32 (free); 33 ~ 64 (with GV-USB dongle)	
Window Division	4, 6, 8, 9, 10, 13, 16, 25, 36, 49, 64	
Single Live View Window	1	
Display Mode	Fisheye dewarping, PIP, PAP, wide angle lens dewarping, fisheye object tracking, zoom, snapshot	
Audio	Two-way	
PTZ	Pan, tilt and zoom	
Host Recording (Monitoring)	Enable/disable monitoring of a single host or all hosts (for GV-IP Devices)	
Channel Status Indicator	Yellow	Not under monitoring
	Green	Under monitoring but not being recorded
	Red	Under monitoring and is being recorded
Host Batch Management	NAS setup, IP address configuration, time synchronization with GV-Edge Recording Manager(for GV-IP Devices)	

**Note:** NAS setup is supported by GV-IP Camera (firmware V3.0 or later), GV-Target Camera (firmware V1.02 or later), GV-EFD2101/EFD3101/EVD2100/EVD3100 (firmware V1.00 or later)

Playback	
No. of Remote Playback windows	1
Playback Mode	Fisheye dewarping, wide angle lens dewarping, defog, PIP, PAP, Stabilizer

**Note:** The Playback Mode is not available when you access the recordings saved on the NAS System.

Others	
Language	Arabic / Bulgarian / Czech / Danish / Dutch / English / Finnish / French / German / Greek / Hebrew / Hungarian / Indonesian / Italian / Japanese / Lithuanian / Norwegian / Persian / Polish / Portuguese / Romanian / Russian / Serbian / Simplified Chinese / Slovakian / Slovenian / Spanish / Swedish / Thai / Traditional Chinese / Turkish

**Note:** All specifications are subject to change without prior notice.

## Options

GV-NAS System	GV-NAS System is a Linux-based, network attached storage device designed to store GV-IP Camera and GV-Target Camera recordings.
---------------	---