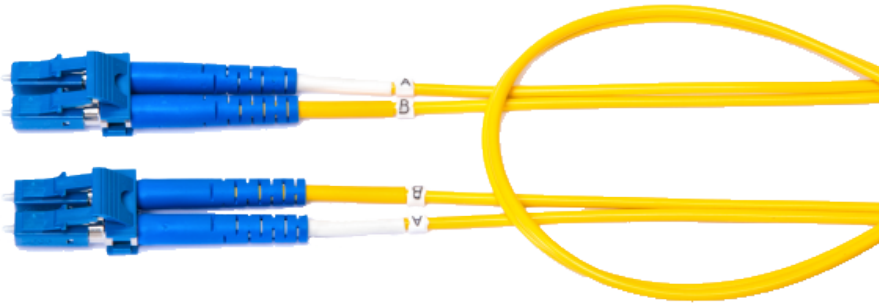


FPSLDLD003M Cable Assemblies - FiberExpress Duplex Patch Cord



For more Information
please call
1-800-Belden1



General Description:

FX PATCH CORD, OS2, LC DUPLEX - LC DUPLEX, 3 M, OFNR, DUPLEX ZIP 2.0 MM, A-TO-B, YELLOW JACKET

Usage (Overall)

Suitable Applications:	Data Centers, Main Equipment Rooms, Telecommunications Rooms and Work Area
Related Parts:	FiberExpress Adapter Strips, FiberExpress Manager Modules and FiberExpress Ultra Frames and Cassettes. Workstation Outlets

Multi Conductor

Physical Characteristics

Overall Cabling

Overall Cabling Fillers:	Refer to cable Technical Specifications
---------------------------------	---

Overall Diameter

Overall Nominal Diameter:	0.078 x 0.156 in.
----------------------------------	-------------------

Physical Characteristics (Connectivity)

Fiber Type

Fiber Type:	SM, (OS2)
--------------------	-----------

Materials

Materials:

Description	Type	Material	Color
Connectors for both ends	LC-DUPLEX	Plastic	Blue
Boots for both ends		Rubber	Blue
Ferrules for both ends	1.25mm	Zirconia-Ceramic	

Wiring Scheme

Wiring Scheme:	TIA/EIA 568-C.3
-----------------------	-----------------

Weight

Weight:	0.127 lbs.
----------------	------------

Packaging

Packaging:	Individually packaged.
-------------------	------------------------

Mechanical Characteristics (Connectivity)

Storage Temperature Range:	-40°C To +75°C
-----------------------------------	----------------

Operating Temperature Range:	-40°C To +75°C
-------------------------------------	----------------

Environmental/Mechanical Characteristics:

Test (Method)	TIA 568-D.3	Belden
Thermal Cycling (FOTP-3)	n/a	-40 to 75°C cycling for 7 days

FPSLDLD003M Cable Assemblies - FiberExpress Duplex Patch Cord

Temperature Life (FOTP-4)	60°C for 4 days	85°C for 7 days
Humidity (FOTP-5)	90-95% at 40°C for 4 days	95% @ 75°C for 7 days
Durability (FOTP-21)	500 cycles	6 x 200 cycles (3 Elevations)
Cable Retention (FOTP-6)	5.0 kg @ 0 deg.	1.94 kg @90 deg.
Flex (FOTP-1)	0.5 kg @ 90° to -90° for 100 cycles	0.9 kg @ 90° to -90° for 100 cycles
Twist (FOTP-36)	1.5 kg for 10 cycles	1.5 kg for 10 cycles

Overall Length Tolerances:

Range	Tolerance	Range	Tolerance	Range	Tolerance
Sx & Dx Patchcord	Sx & Dx Patchcord	MPO Trunk	MPO Trunk	Multi-Fiber Cable Assembly	Multi-Fiber Cable Assembly
0 to 2 meters	+0.2 / -0 meter	0 to 2 meters	+0.2 / -0 meter	0 to 2 meters	+0.2 / -0 meter
2.1 to 5.0 meters	+0.3 / -0 meter	2.1 to 5.0 meters	+0.3 / -0 meter	2.1 to 5.0 meters	+0.3 / -0 meter
5.1 to 40 meters	+0.4 / -0 meter	5.1 to 20 meters	+0.4 / -0 meter	5.1 to 20 meters	+0.4 / -0 meter
Over 40.1 meters	+ 1.0% / -0%	Over 20.1 meters	+ 1.0% / -0%	Over 20.1 meters	+ 1.3 / -0 meter

Applicable Specifications and Agency Compliance (Overall)

Applicable Standards & Environmental Programs

UL Rating:	Riser
EU Directive 2002/95/EC (RoHS):	Yes
EU RoHS Compliance Date (mm/dd/yyyy):	01/01/2006
MII Order #39 (China RoHS):	EUP 50
Telecommunications Standards:	TIA 568.C.3
Safety Listing:	ACA, Bi-national Standard Listed

Suitability

Suitability - Indoor:	Yes
------------------------------	-----

Transmission Characteristics (Connectivity)

Optical Connector Performance:

Description	OM1 (62.5 μm)	OM2 (50 μm)	OM3 (50 μm)	OM4 (50 μm)	OS2 (Singlemode) UPC	OS2 (Singlemode) APC
Maximum IL (dB) SingleFiber Connector LC - SC - ST	0.25 dB	0.25 dB	0.25 dB	0.15 dB	0.35 dB	0.35 dB
Typical RL (dB) SingleFiber connector LC - SC - ST	-30 dB	-30 dB	-30 dB	-30 dB	-55 dB	-65 dB
Maximum IL (dB) MultiFiber Connector MPO	0.5 dB	0.5 dB	0.35 dB	0.2 dB	-	0.75 dB
Typical RL (dB) MultiFiber Connector MPO	-30 dB	-30 dB	-30 dB	-30 dB	-	-60 dB

Electrical Characteristics (Overall)

Notes (Overall)

Product Family

Put Ups and Colors:

Item #	Putup	Ship Weight	Color	Notes	Item Desc
FPSLDLD003M	1 EA	0.058 KG			FXPC OS2 LC_DX LC_DX 3M

Revision Number: 0 Revision Date: 02-11-2016

© 2017 Belden, Inc.
All Rights Reserved.

Although Belden makes every reasonable effort to ensure their accuracy at the time of this publication, information and specifications described herein are subject to error or omission and to change without notice, and the listing of such information and specifications does not ensure product availability. Belden provides the information and specifications herein on an "AS IS" basis, with no representations or warranties, whether express, statutory or implied. In no event will Belden be liable for any damages (including consequential, indirect, incidental, special, punitive, or exemplary damages) whatsoever, even if Belden has been advised of the possibility of such damages, whether in an action under contract, negligence or any other theory, arising out of or in connection with the use, or inability to use, the information or specifications described herein. All sales of Belden products are subject to Belden's standard terms and conditions of sale. Belden believes this product to be in compliance with EU RoHS (Directive 2002/95/EC, 27-Jan-2003). Material manufactured prior to the compliance date may be in stock at Belden facilities and in our Distributor's inventory. The information provided in this Product Disclosure, and the identification of materials listed as reportable or restricted within the Product Disclosure, is correct to the best of Belden's knowledge, information, and belief at the date of its publication. The information provided in this Product Disclosure is designed only as a general guide for the safe handling, storage, and any other operation of the product itself or the one that it becomes a part of. This Product Disclosure is not to be considered a warranty or quality specification. Regulatory information is for guidance purposes only. Product users are responsible for determining the applicability of legislation and regulations based on their individual usage of the product.