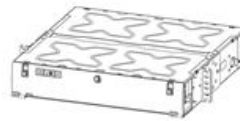


## ECX-02U Faceplates and Panels - FX ECX 2U Housing 19" width



For more Information  
please call

1-800-Belden1

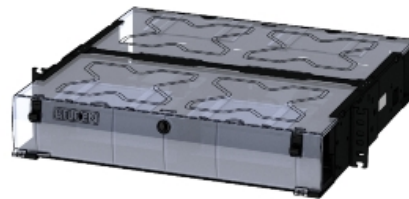


### General Description:

FiberExpress ECX Patch Panel Housing 2U, holds 4 ECX adapter frames or cassettes

### Image

Image:



### Usage (Overall)

**Suitable Applications:** FiberExpress Solutions, Backbone, Telecommunications Room, Main Distribution Room, Data Centers

**Related Parts:** FiberExpress ECX Frames, Cassettes and Housing Accessories

### Physical Characteristics (Connectivity)

#### Capacity

#### Access

**Termination Area:** Front Sliding Drawer

#### Dimensions

Dimensions:

Height (mm)	Width (mm)	Depth (mm)
86.106	485.648	446.024

#### Materials

Materials:

Description	Material
Housing	Steel
Housing	PC/ABS
Housing	Polycarbonate

#### Color

**Color:** Black, White

#### Weight

**Weight:** 2.472 kg

#### Included Parts

**Included Parts:** Screws (12-24); Screws (10-32); Tie Wraps; Velcro Straps; Identification Labels; Quick Installation Guides; Strain Reliefs

#### Packaging

**Packaging:** Individually packaged in a cardboard box.

### Mechanical Characteristics (Connectivity)

**Storage Temperature Range:** -40°C To +70°C

**Operating Temperature Range:** -10°C To +60°C

## ECX-02U Faceplates and Panels - FX ECX 2U Housing 19" width

### Applicable Specifications and Agency Compliance (Overall)

#### Applicable Standards & Environmental Programs

EU Directive 2002/95/EC (RoHS):	Yes
EU RoHS Compliance Date (mm/dd/yyyy):	02/23/2009
MII Order #39 (China RoHS):	EUP 50

#### Suitability

Suitability - Indoor:	Yes
-----------------------	-----

### Transmission Characteristics (Connectivity)

### Notes (Overall)

Notes: For more information, please refer to our web site at <http://www.belden.com>. Installation Guide:PX106483.

### Product Family

#### Part Numbers:

Description	Item Number
FX ECX Patch Panel Housing 1U	ECX-01U
FX ECX Patch Panel Housing 2U	ECX-02U
FX ECX Patch Panel Housing 4U	ECX-04U

### Put Ups and Colors:

Item #	Putup	Ship Weight	Color	Notes	Item Desc
ECX-02U	1 EA	18.000 LB			FX ECX 2U PATCH PANEL HOUSING

Revision Number: 0    Revision Date: 09-26-2016

© 2017 Belden, Inc.  
All Rights Reserved.

Although Belden makes every reasonable effort to ensure their accuracy at the time of this publication, information and specifications described herein are subject to error or omission and to change without notice, and the listing of such information and specifications does not ensure product availability. Belden provides the information and specifications herein on an "AS IS" basis, with no representations or warranties, whether express, statutory or implied. In no event will Belden be liable for any damages (including consequential, indirect, incidental, special, punitive, or exemplary damages) whatsoever, even if Belden has been advised of the possibility of such damages, whether in an action under contract, negligence or any other theory, arising out of or in connection with the use, or inability to use, the information or specifications described herein. All sales of Belden products are subject to Belden's standard terms and conditions of sale. Belden believes this product to be in compliance with EU RoHS (Directive 2002/95/EC, 27-Jan-2003). Material manufactured prior to the compliance date may be in stock at Belden facilities and in our Distributor's inventory. The information provided in this Product Disclosure, and the identification of materials listed as reportable or restricted within the Product Disclosure, is correct to the best of Belden's knowledge, information, and belief at the date of its publication. The information provided in this Product Disclosure is designed only as a general guide for the safe handling, storage, and any other operation of the product itself or the one that it becomes a part of. This Product Disclosure is not to be considered a warranty or quality specification. Regulatory information is for guidance purposes only. Product users are responsible for determining the applicability of legislation and regulations based on their individual usage of the product.